

currenza heartbeat for the c² coin changer

The currenza heartbeat software is used to configure but also diagnose the NRI coin changers currenza c² on the PC.

Properties & application

- Any individual setting or
- Upload of a complete coin and device configuration from a database (current data blocks provided by NRI)
- Quick batch configuration based on a master coin changer
- Flexible on-site configuration:
 - Generating and saving a particular configuration with heartbeat
 - Uploading this configuration on the HENRI on-site service tool
 - Updating the coin changers at the machine with HENRI
- Detailed diagnostics of
 - hardware parts such as acceptance, sorting and filling level sensor systems
 - particular coin changer configurations from the field
- Convenient tooltips explaining possible settings
- Quick settings with the right mouse button
- Protection against unauthorised access and authentication with customised SIM licence card
- Forward-looking, also suited for other NRI coin validation systems
- Easy software update from NRI website

Name	1	2	3	4	5	6
DIL switches	OFF	OFF	OFF	OFF	OFF	OFF
Gates	Sorter/Box	Left/Right	Side/Mid	Back left	Back right	
Light sensors	LS1	LS2	LS3			
CP sensors	CP3C	CP3S	CP4L	CP4R		

Name	A	B	C	D	E	F
diode 100%	ok	ok	ok	ok	ok	ok
diode 75%	ok	ok	ok	ok	ok	ok
diode 50%	ok	ok	ok	ok	ok	ok
diode 0%	ERR	ERR	ERR	ERR	ERR	ERR

What can be set?

The following sections list in detail what can be set in a currenza c² using currenza heartbeat.

Display settings

- Menu language for c² or HENRI
- Contrast (only c² blue)
- Display message for operating mode (only c² blue)

Settings for filling & emptying the coin cassette

- Float level
 - Float level per tube
 - Float-up function
 - Setting tube counters to float levels automatically
- Correction of tube counters according to filling level sensors
- Reset of tube counters before fill-up
- Redirecting cash-box coins to return area
- Reporting inserted coins to machine/displaying inserted coins on machine (only c² MDB)
- Disabling/enabling inventory keys / disabling/enabling inventory keys using MDB/BDV protocol (only c² blue/green)

Name	Value
COMMON	
decimal places	2
coin scale factor	0.05
telephone code	49
currency code	1978
cond. TUBE EMPTY	0
subvent	0
language	0
display	change
contrast	cashbox
RECYCLER	nothing
base value	inventory
recycler bill value 1	
recycler bill value 2	0.00

Name	Value
COMMON	
configure inventory keys	enabled
tube counter correction	inactive
program tube counters automatically	inactive
float-up	active
float-up	inactive
float-up to zero	inactive
simple payout	inactive



Prices & vending modes (only c² BDV/Executive)

- Price holding in the coin changer
 - Prices
 - Price holding
 - Displaying price
- "Committed to vend" or change return at any time
- Single or multi vend
- Resetting or storing credit which cannot be paid out

BDV/Exec	
single vend	active
committed to vend	inactive
erase residual credit	inactive
price holding	active
show selected price in holding	inactive
second price list in price holding	inactive
acceptance limit	0.00
change limit	0.00
credit limit for cashless	0.00

Cash acceptance

Channel	ISO	Value	Pr.	Rv.	Thck.	CT	Block A	CT	Block B	Alternate
CH01	EUR	-,05	0	A	1.67	0	active	0	inactive	
CH02	EUR	-,10	0	A	1.93	1	active	0	inactive	10,10
CH03	EUR	-,20	0	A	2.14	2	active	0	inactive	
CH04	EUR	-,50	0	A	2.38	3	active	0	inactive	
CH05	EUR	1,-	0	A	2.33	4	active	0	inactive	1,10
CH06	EUR	2,-	0	A	2.20	5	active	0	inactive	
CH07	EUR	-,05	1	A	1.67	0	active	0	inactive	
CH08	EUR	-,10	1	A	1.93	1	active	0	inactive	
CH09	EUR	-,20	1	A	2.14	2	active	0	inactive	
CH10	EUR	-,50	1	A	2.38	3	active	0	inactive	
CH11	EUR	1,-	1	A	2.33	4	active	0	inactive	
CH12	EUR	2,-	1	A	2.20	5	active	0	inactive	
CH13										
CH14										
CH15										
CH16										
CH17										
CH18										
CH19										
CH20										
CH21										
CI		teach new coin	0	A		13	active	0	inactive	
CH23	TOK	2	0	A		14	active	0	inactive	
CH24	TOK	1	0	A		15	active	0	inactive	

- New coin denominations & tokens
- Acceptance of coins and banknotes (only c² BDV/Executive)
- Acceptance of tube coins (filling level limitation)
- Inhibiting coins
- Inhibiting high-value coins if there is not enough change (only c² BDV/Executive)
- Optimisation of acceptance of genuine coins and rejection of fraud coins
 - Definition of acceptance tolerances
 - Fine-tune of acceptance bands
- Coin group A or B
- Preventing coin from getting stuck in the tubes
 - Security stock for each tube
 - Transmission of tube filling level incl. security stock to VMC (only c² MDB)
 - Enabling VMC to payout security stock with DISPENSE (only c² MDB)

Change payout

C1 - 00			C2 - 00			C3 - 00			C4 - 00			C5 - 00			C6 - 00			C7 - 00			C8 - 00								
A	EUR	2,-	0	A	A	EUR	2,-	0	A	A	EUR	2,-	0	A	A	EUR	2,-	0	A	A	EUR	-,50	0	A	A	EUR	-,50	0	A
B	EUR	-,05	0	A	B	EUR	-,05	0	A	B	EUR	-,05	0	A	B	EUR	-,05	0	A	B	EUR	-,10	0	A	B	EUR	-,10	0	A
C	EUR	1,-	0	A	C	EUR	1,-	0	A	C	EUR	1,-	0	A	C	EUR	1,-	0	A	C	EUR	-,50	0	A	C	EUR	-,50	0	A
D	EUR	-,10	0	A	D	EUR	-,10	0	A	D	EUR	-,10	0	A	D	EUR	-,10	0	A	D	EUR	-,10	0	A	D	EUR	-,10	0	A
E	EUR	-,20	0	A	E	EUR	-,20	0	A	E	EUR	-,20	0	A	E	EUR	-,20	0	A	E	EUR	-,20	0	A	E	EUR	-,20	0	A
F	EUR	-,50	0	A	F	EUR	-,50	0	A	F	EUR	-,50	0	A	F	EUR	-,50	0	A	F	EUR	-,50	0	A	F	EUR	-,50	0	A

- Reassignment of coin cassette
- Limitation of change return (only c² BDV/Executive)
- Conditions for tube empty message (only c² BDV/Executive)
- Low-power single-motor payout

Peripheral

- Hopper coins
- Recycler settings
 - Inhibiting of high-value banknotes depending on change stock (only c² MDB)
 - Payout of all banknotes (compensate the machine's security stock) (only c² MDB)

Basic settings

- Smallest coin value (base value)
- Alternative coin value for second currency or a token value
- Currency/calling code (only c² MDB)
- MDB level (only c² MDB)
- Wake-up time (only c² MDB)
- Coin changer write protection for BDV machines (only c² BDV)

Name	Value
COMMON	
decimal places	2
coin scale factor	0,05
telephone code	73
currency code	1978
cond. TUBE EMPTY	0
subvent	0

All-round configuration

- Data block upload of current coin and device configurations provided by NRI
- Batch configuration by generating a master configuration and uploading the configuration on HENRI
- Resetting a coin changer to an old configuration status



System requirements

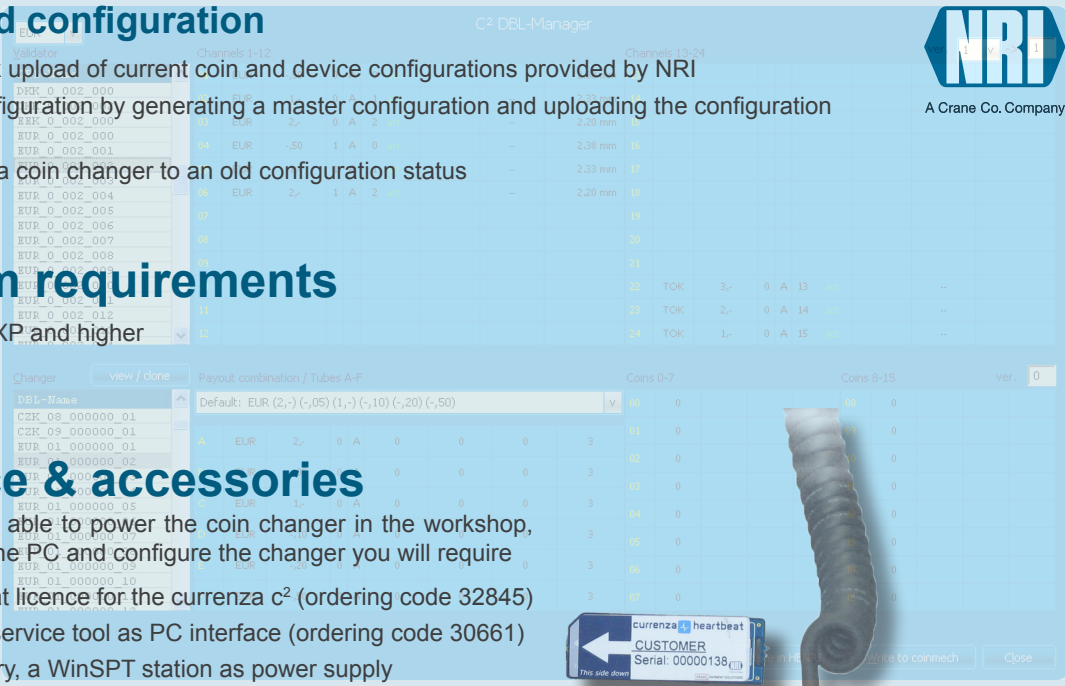
- Windows XP and higher
- USB port

Licence & accessories

In order to be able to power the coin changer in the workshop, connect it to the PC and configure the changer you will require

- a heartbeat licence for the currenza c² (ordering code 32845)
- a HENRI service tool as PC interface (ordering code 30661)
- if necessary, a WinSPT station as power supply
 - MDB basic kit with Euro plug (ordering code 24688) or
 - MDB basic kit with USA plug (ordering code 24854)
 - Accessory kit "BDV/Executive" (ordering code 26218)

i The coin changer may also be powered by the machine or own, e.g., simulators.



heartbeat & data block download

Along with your licence card you will receive an individual customer password to be able to log in to our download page at www.nri24.com. Here you may download the software including all current data blocks.

i Using this password you also gain access to the current HENRI firmware and the corresponding flash application.

Additional technical documentation

All NRI product descriptions, e.g., for heartbeat and the currenza c² coin changer are available as PDF at www.nri24.com (→ Download).

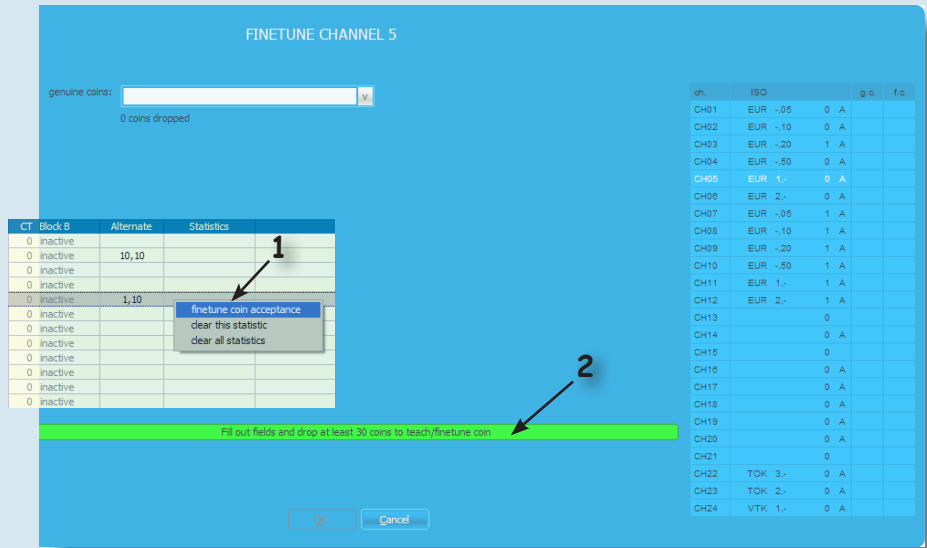




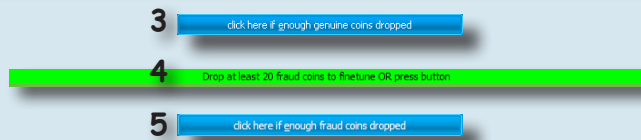
A Crane Co. Company

Example „Finetuning a coin“

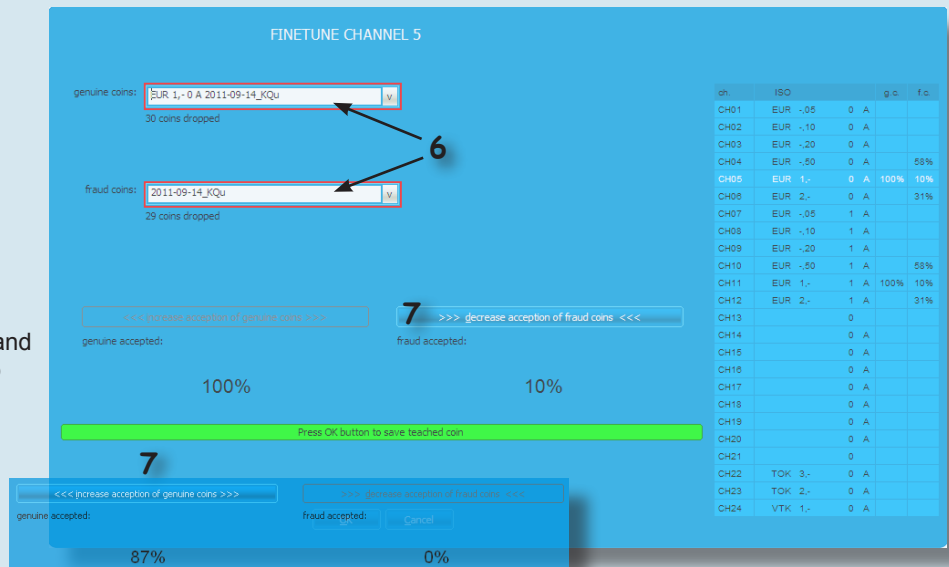
- 1 a) Right-click into column „Statistics“ to choose coin channel.
- b) Pick „finetune coin acceptance“ from menu.
- 2 Insert at least 30 different genuine coins.



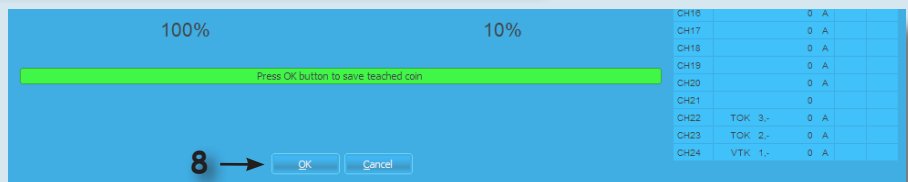
- 3 Confirm coin insertions.
- 4 Insert at least 20 fraud coins of the same type.
- 5 Confirm coin insertions.



- 6 If necessary, name finetune insertions.
- 7 Optionally, optimize genuine coin acceptance and fraud coin rejection, step by step.



- 8 Confirm and save finetuning insertions by clicking „OK“.



02.10 Goe/JMo/KQu
Version 1.1
DB.HC2-EN



Crane Payment Solutions GmbH • Zum Fruchthof 6 • D-21614 Buxtehude
Web: info@craneps.com • www.craneps.com • Phone: +49 (0) 41 61-729-0 • Fax: +49 (0) 41 61-729-115