

Evolution Hopper

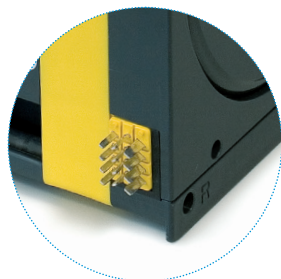
High Dispensing Speed and Reliability Come Together



Based on a belt drive, Evolution Hopper is excellent in terms of both performance and ease of maintenance. The unique concept provides a single build type hopper that is suitable for 95% of the world's coins and tokens without needing adjustments. A large DC motor in combination with an electronic motor control board yields reduced friction and motor noise. The optic board is easily accessible by removing the electronic control board from outside the hopper.

Features

- ✓ High capacity: >1,100 coins (Ø 23mm)
- ✓ Built-in agitator to prevent coin jams
- ✓ Pay out speed: 4 coins per second
- ✓ Low and high level sensing
- ✓ 3 different coin sizes available: 16.25-20.9 mm, 19-26.4 mm (Euro Hopper) 21-30 mm
- ✓ Modular space & efficient system

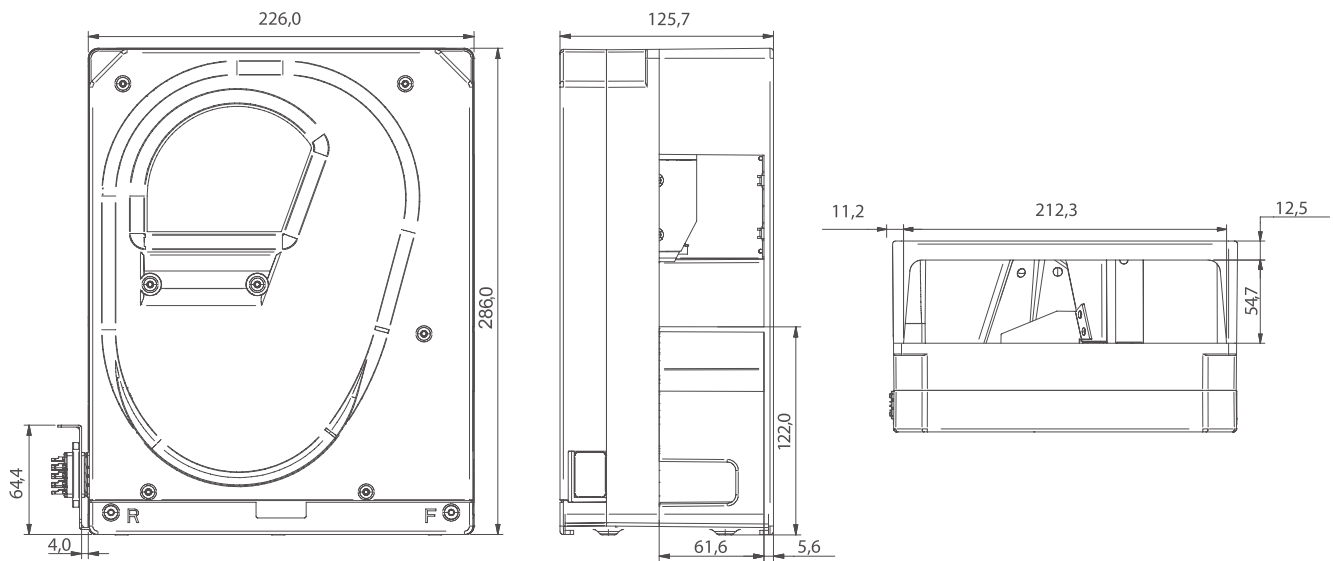


Standard connector



Payout sensor easily accessible for maintenance

Technical Schematics



Unit of measure: mm

Functions

- ▶ DC motor
- ▶ Double installation option: adjoining and standard
- ▶ Minimal maintenance
- ▶ Reduced noise
- ▶ Anti-jam electronics



Board easily extractable from the outside

Technical Specifications

Dimensions (L x H x W)	126 x 286 x 226 mm
Weight	2,5 Kg
Power supply	20 ÷ 24 Vdc ± 10 %
Current consumption	40 mA in stand-by - 2.5A during dispensing
Power consumption	0.8 W in stand-by - 50 W during dispensing
Operating temperature	0 °C ÷ 60 °C - relative humidity 5 ÷ 95%
Coins accepted	Ø 16 ÷ 30 mm - thickness 1.25 - 3.5 mm
Payout speed	4 - 5 coins per second

Coin Capacity

Capacity	1 €
	1,500